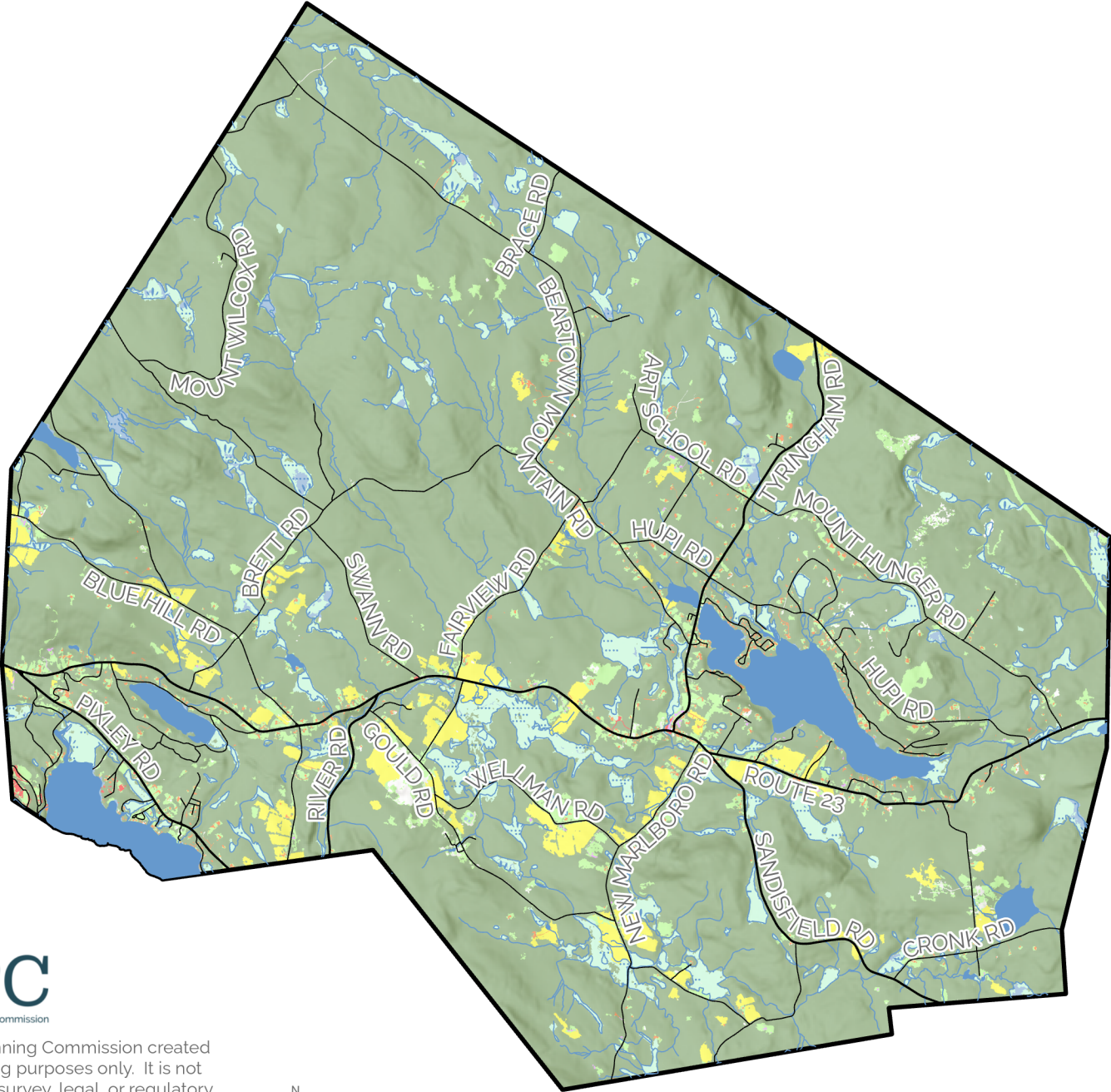


Town of Monterey Master Plan

Land Use Map

- Commercial
- Mixed Use
- Residential
- Agricultural
- Forest
- Grass/Shrub
- Open Land
- Wetland
- Water



The Berkshire Regional Planning Commission created this map for general planning purposes only. It is not to be used for engineering, survey, legal, or regulatory purposes. MassGIS, MassDOT, BRPC, or the municipality may have supplied portions of this data.

