






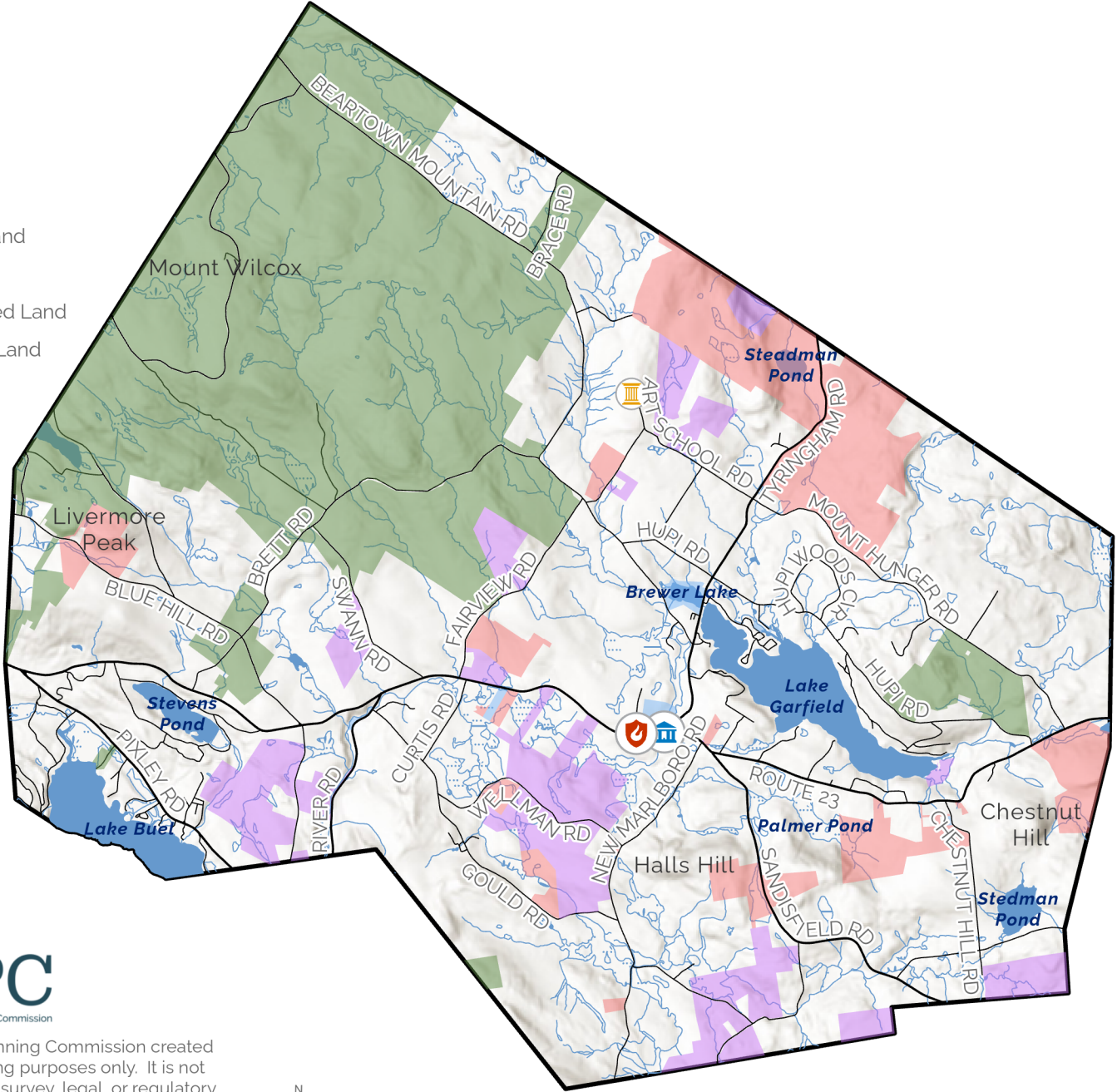


Town of Monterey Master Plan

Points of Interest Map

-  Town Hall
-  Fire Station
-  Museum
-  State Protected Land
-  Land Trust Land
-  Municipal Protected Land
-  Private Protected Land



The Berkshire Regional Planning Commission created this map for general planning purposes only. It is not to be used for engineering, survey, legal, or regulatory purposes. MassGIS, MassDOT, BRPC, or the municipality may have supplied portions of this data.

