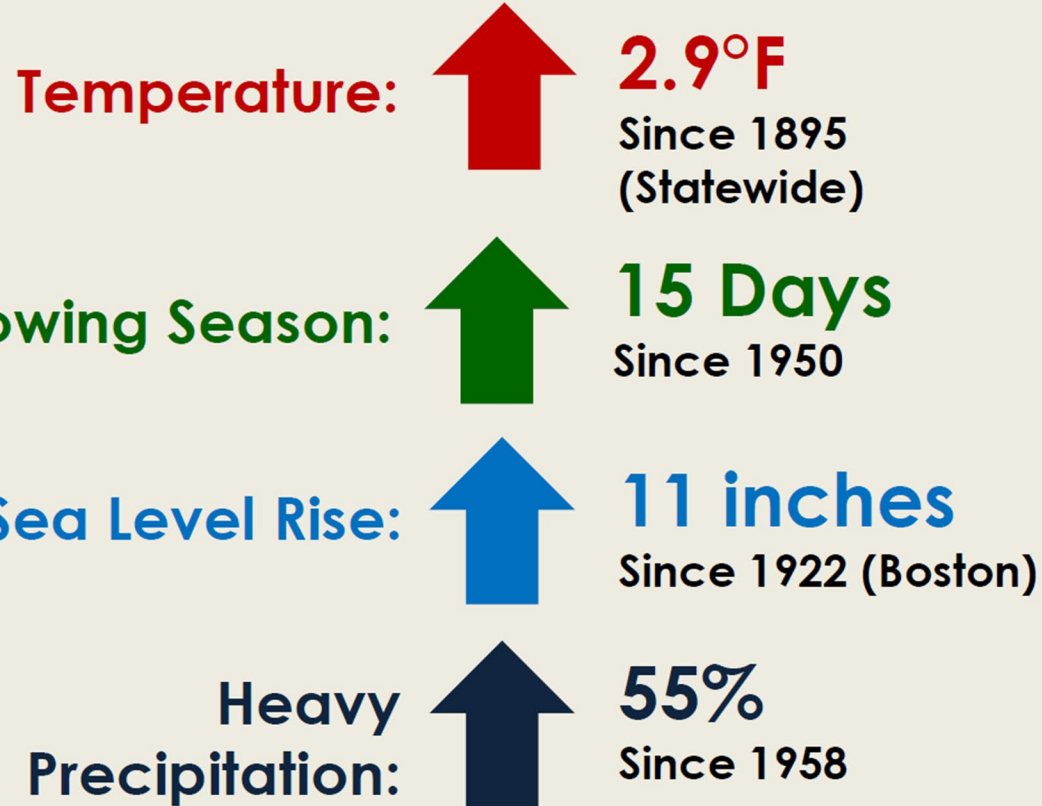


Town Hall Culvert – Route 23/Main Street

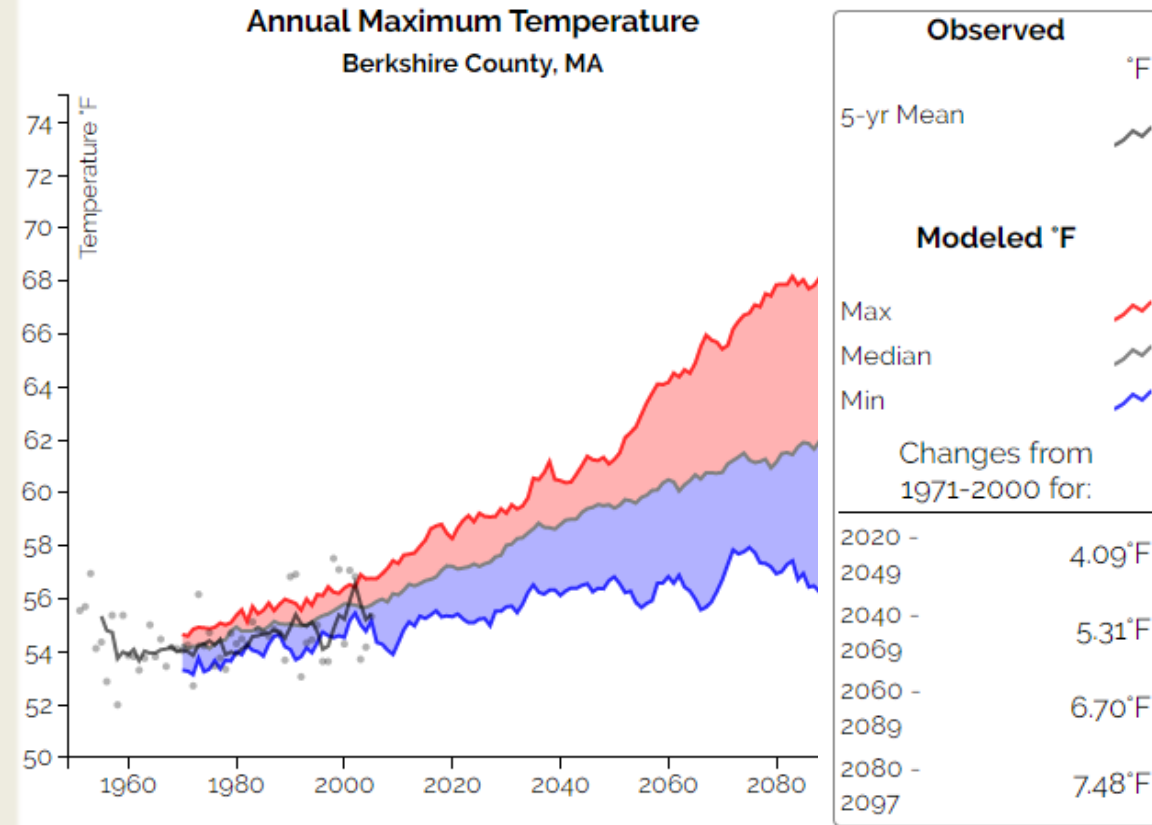
Courteny Morehouse
Berkshire Regional Planning Commission

What is Happening Now?

Massachusetts Observed Climate Changes



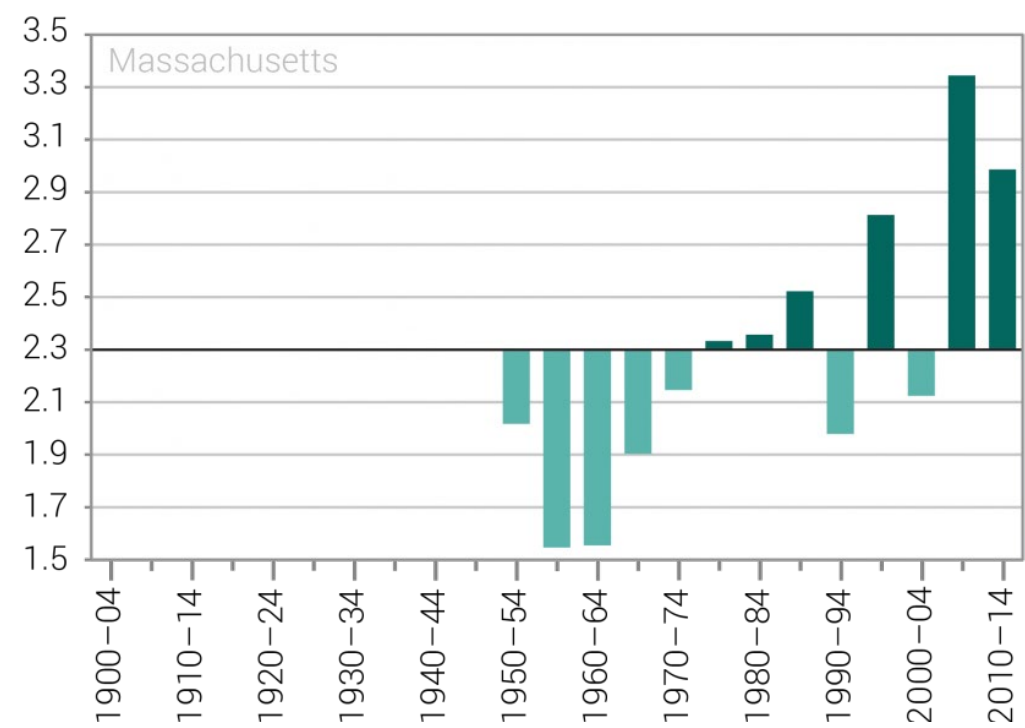
Source: Climate Science Special Report, 2017; NOAA NCEI nClimDiv; NOAA Ocean Service



Source: Resilient MA Data Viewer & Northeast Climate Adaptation Science Center

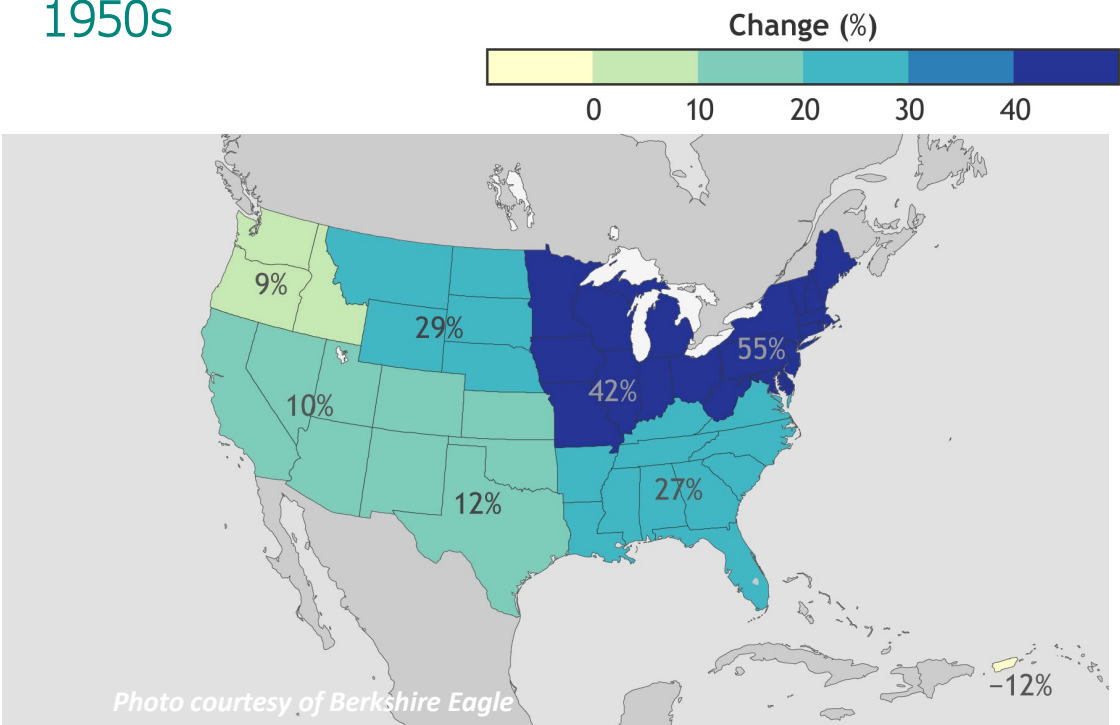
Increased Precipitation

Increased # of precipitation events since 1970s



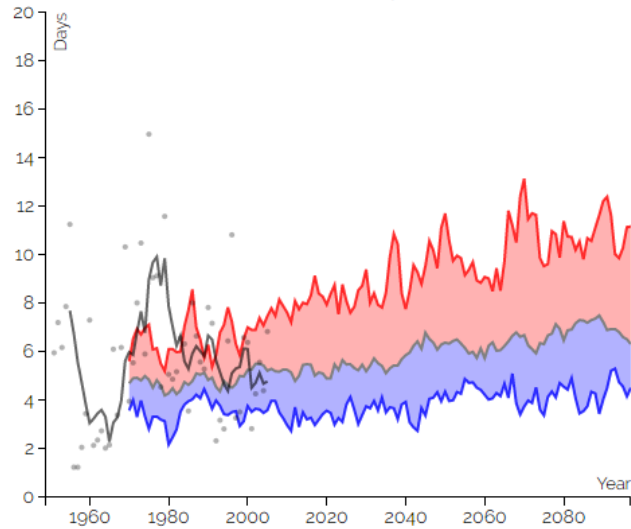
Source: NOAA National Center for Environmental Information MA State Climate Summary 2022

55% Increase in Extreme precipitation since 1950s

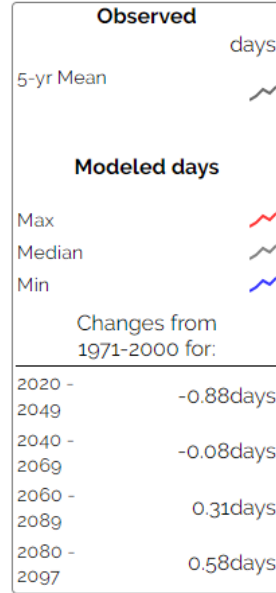


Source: NOAA Climate.gov

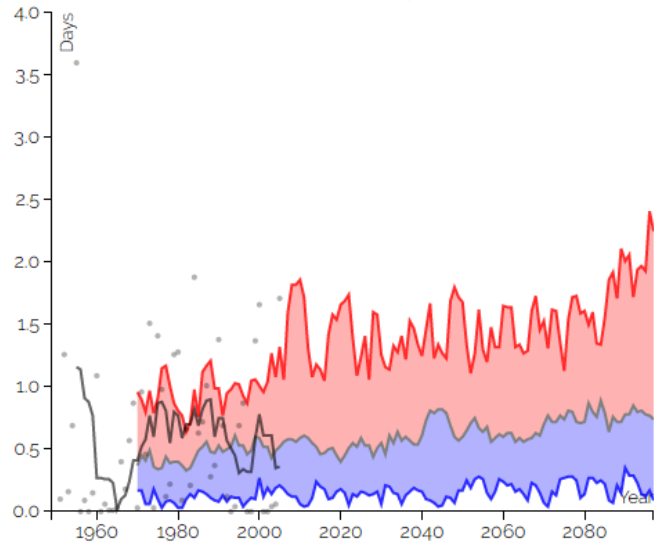
Annual Days with Precipitation > 1"
Berkshire County, MA



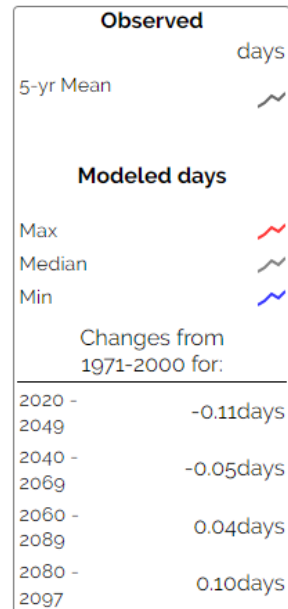
[Download Data](#)



Annual Days with Precipitation > 2"
Berkshire County, MA

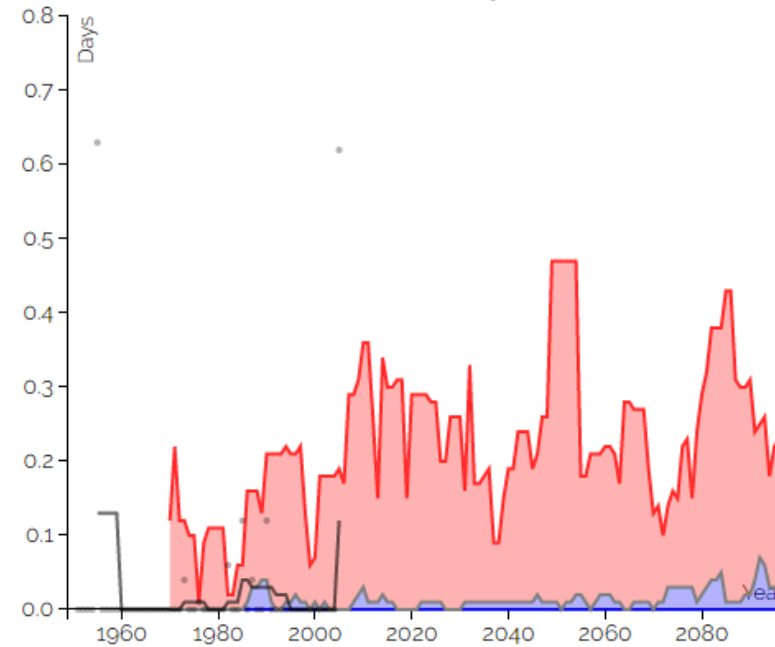


[Download Data](#)

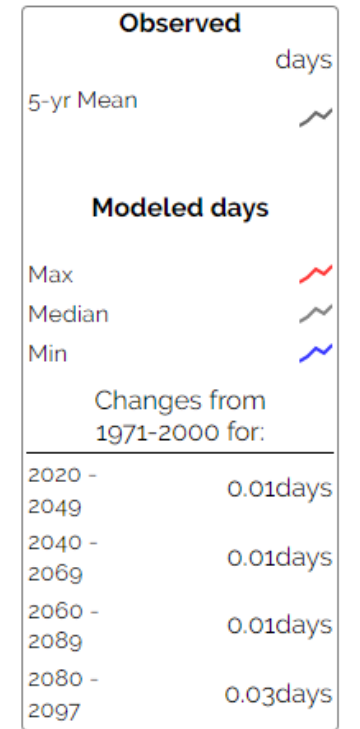


Storm Events

Annual Days with Precipitation > 4"
Berkshire County, MA



[Download Data](#)



Flooding, erosion, & culvert issues

Flooding of Walker Brook
Campground in Chester, MA



Fall Rd in Mt. Washington
after Hurricane Irene



Failure of Benton Hill Culvert



Municipal Vulnerability Preparedness (MVP) Action Grant



MVP

Municipal Vulnerability
Preparedness

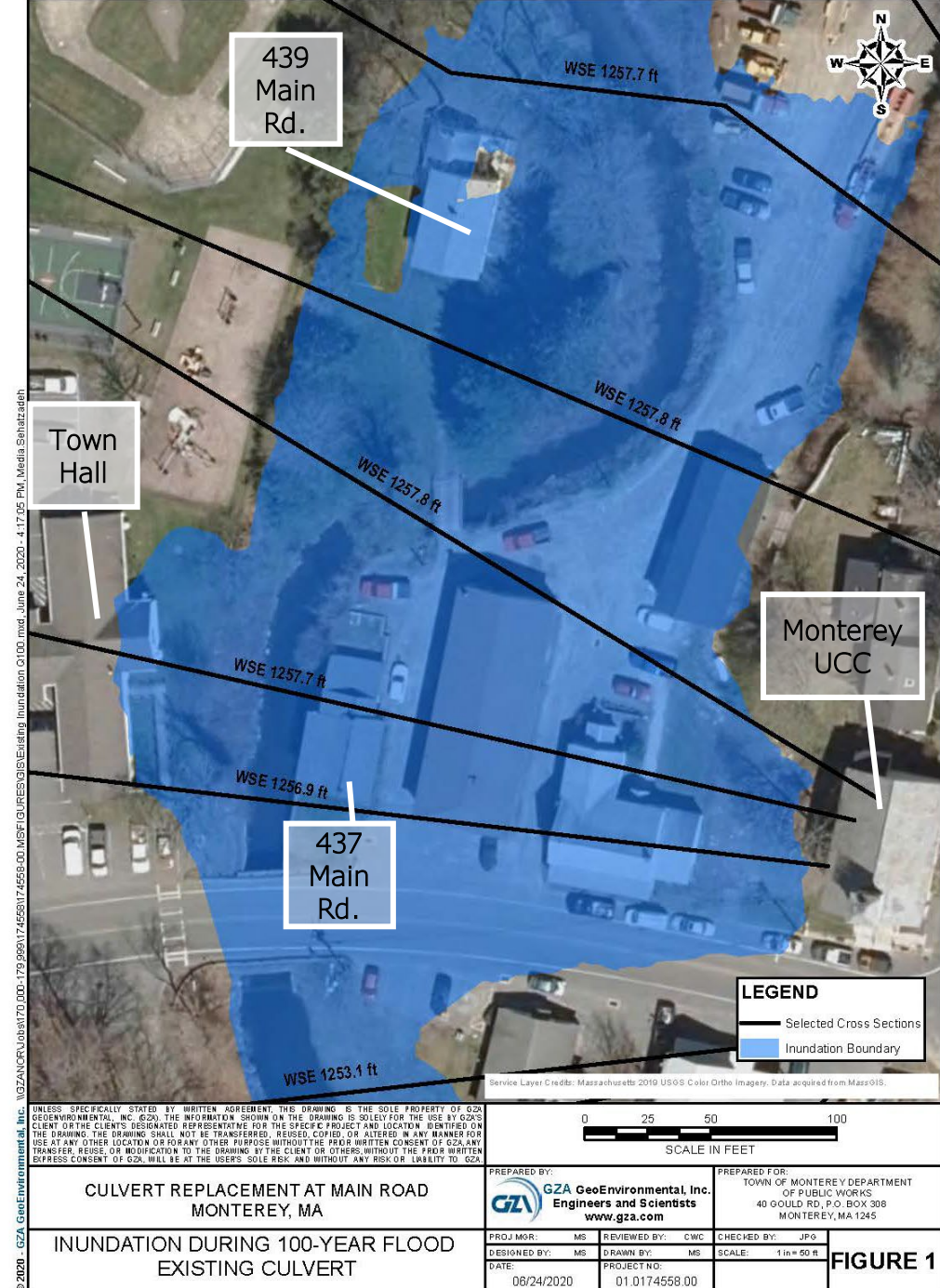
Implement priority
adaptation actions
identified through the
planning process

Clearly demonstrate
how the Town is
incorporating climate
change data to
redesign and
reconsider

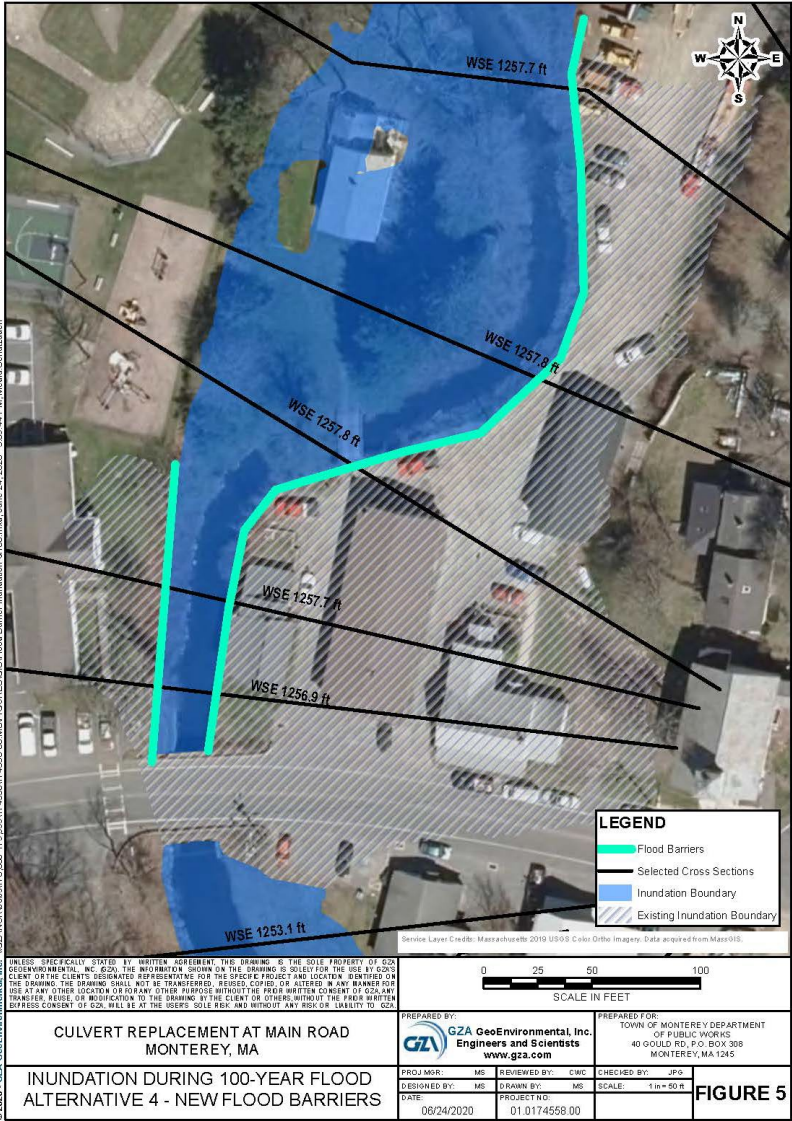
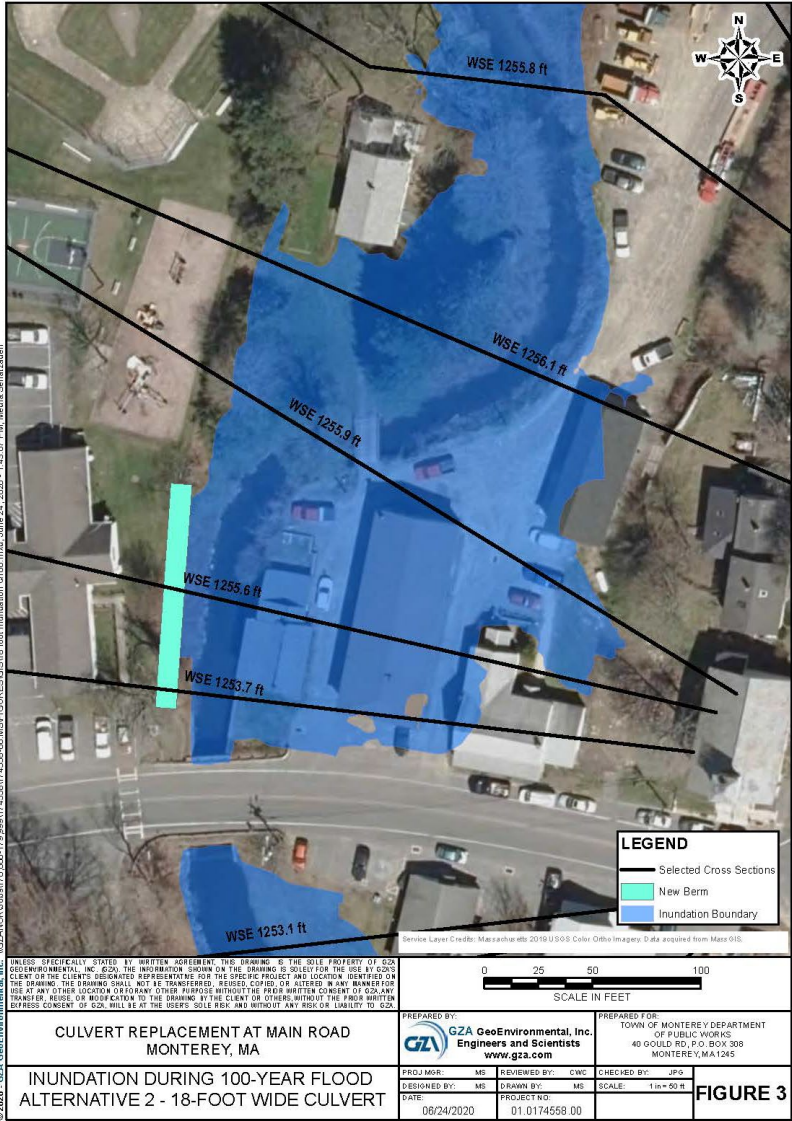
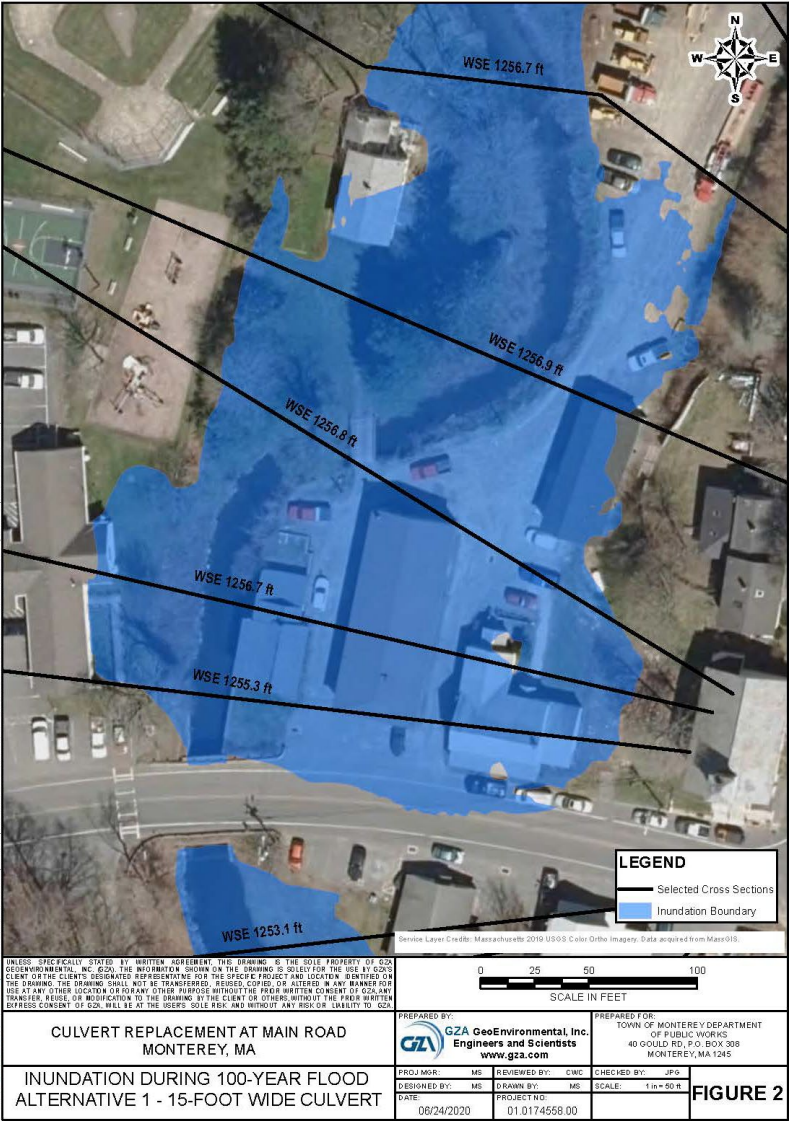
Utilize nature-based
solutions and
engage vulnerable
communities

6

Existing Culvert - Inundation during 100- year Storm



Alternatives Explored



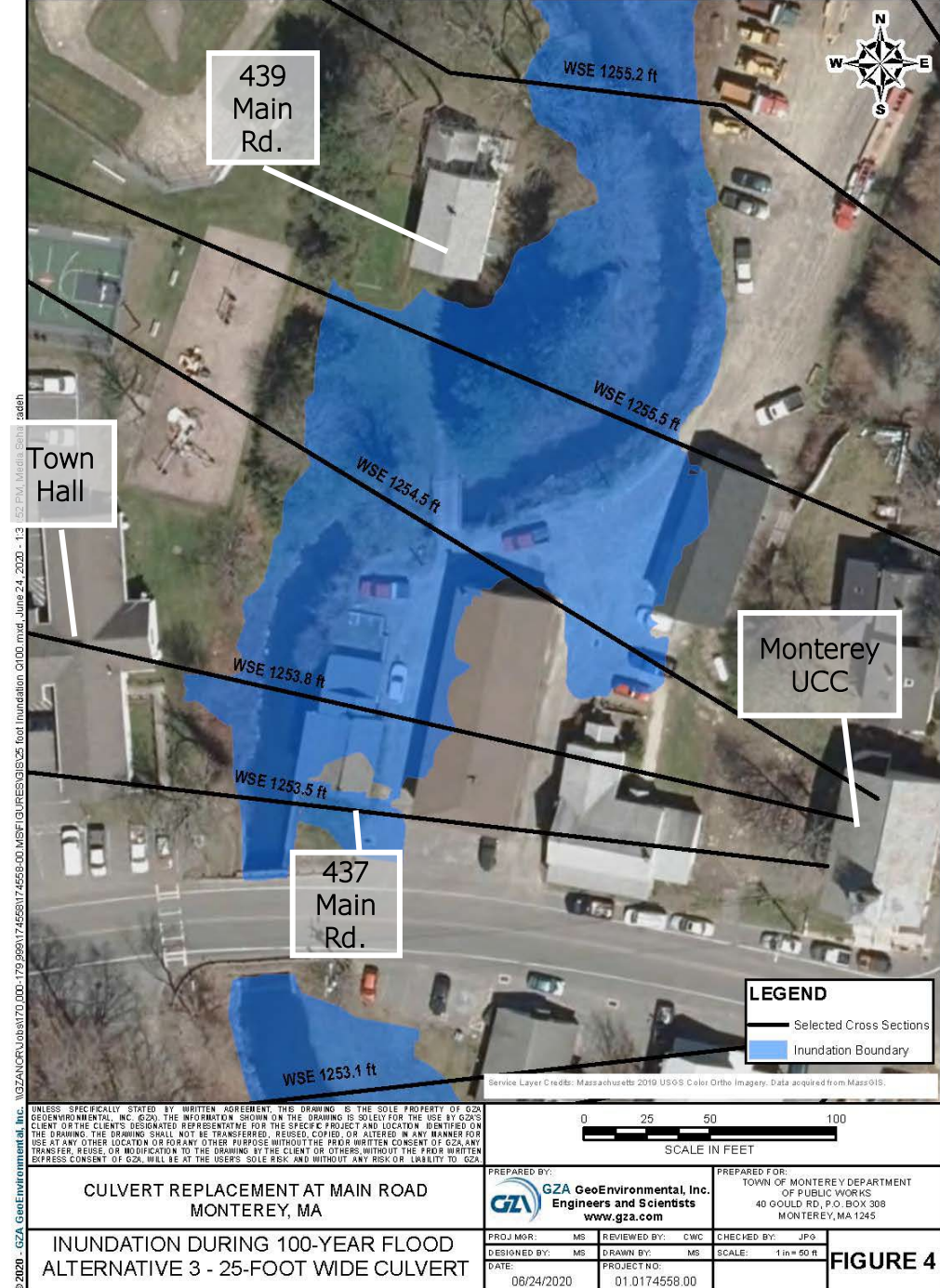
Estimate Cost: \$1.35 Million

Estimate Cost: \$2.1 Million

Estimate Cost: \$1.17 Million

25' Culvert Replacement – Inundation during 100- year storm

Estimate Cost:
\$2.4 Million



Questions?

Courteny Morehouse
cmorehouse@berkshireplanning.org
413-442-1521 x26

www.berkshireplanning.org